



1985 GOLF



THE ALL-NEW 1985 GOLF

The new Golf is the new definition of hatchbacks. It is the benchmark against which all other hatchbacks will be measured. For it is designed to meet the transportation needs of just about anyone who drives.

For those who require plenty of room for people and cargo, the Golf is immensely accommodating. For those who seek spirited performance, the Golf is an exhilarating experience. And to everyone who demands the most for their money, the Golf rewards with an efficiency, reliability and durability unlike any other hatchback on the road.

Obviously, the Golf is more than just a totally new car.

It is a rare combination of versatility and value heretofore unknown in the automotive world.





Although the 1985 Golf is all new, the philosophy upon which it was built goes back to the very first Volkswagen introduced in America: the legendary Beetle. The Beetle astonished the automotive world with its efficiency, reliability and common sense. It taught America that sophisticated engineering and value need not be mutually exclusive. And it showed that a car was meant to last longer than one or two model years.



*The legendary
VW Super Beetle.*

We still travel our own road

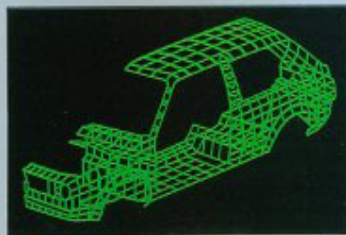
Today, we still design these basic virtues into every Volkswagen we build. And we still refuse to follow popular trends.

We demand that the laws of aerodynamics take precedence over current design fads. We believe in an evolution of excellence, the continual process of improvement and

refinement in the pursuit of perfection. We insist on the strictest quality control, with the result that every part of every Volkswagen undergoes several inspections by both man and computer. And, although we employ the latest technology in our manufacturing process, we believe in traditional craftsmanship, in artisans who maintain standards of pride and dedication no machine can ever match.

A passion for perfection

Our German engineers impart their own unabashed passion for engineering excellence and overall performance into every Volkswagen they design.



They employ advanced technology instead of automotive gimmickry. They provide outstanding efficiency without compromising stunning performance. And they engineer every Volkswagen with such precision that virtually every driving command can be executed swiftly.

As a result, you do not drive a car. You have the unique pleasure of driving a Volkswagen.

The Volkswagen 2-year Unlimited Mileage Protection Plan

For greater peace-of-mind enjoyment of your new Golf, we've



The new Golf is a mechanical marvel—a superb example of German automotive technology.

introduced a new Protection Plan that's as simple and straightforward as a Volkswagen itself.

Your new Golf is protected by a 2-year unlimited mileage limited warranty on the entire vehicle (except tires), and a 3-year unlimited mileage limited warranty on rust perforation. See your U.S. Volkswagen dealer for details.

Isn't it nice to feel secure in your decision to drive a new Volkswagen?



Golf's computer-aided design takes shape at Volkswagen World Headquarters in Wolfsburg, West Germany.

BUMPER TO BUMPER INGENUITY

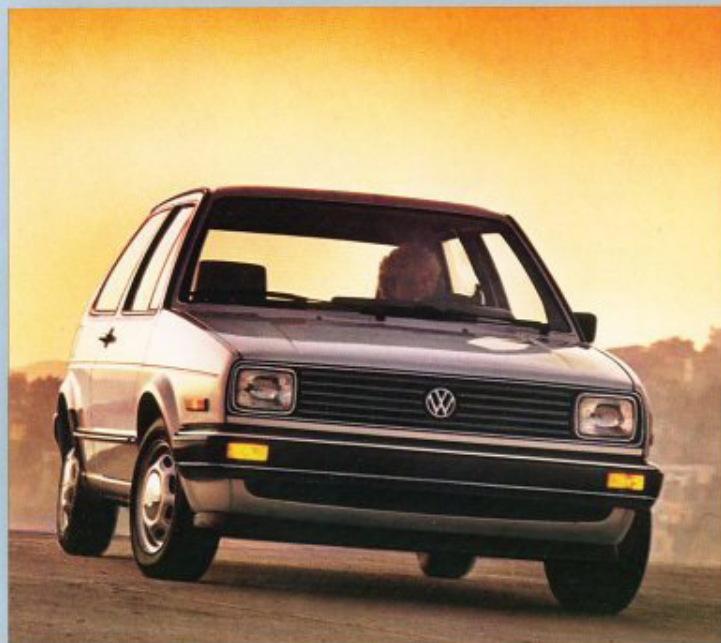
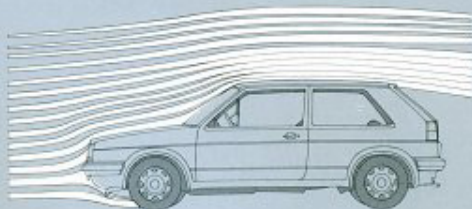


A close examination of the Golf's design and engineering features reveals that this is indeed a well-conceived automobile. Its aerodynamics bespeak a stylish efficiency destined to save fuel year after year*. While its wide stance and extended wheelbase promote exceptional handling. Insure a comfortable ride. And help support its unusually spacious interior.

Engineered into the car itself is a wide array of standard convenience

features that increase both the pleasure and the security of the driving experience. These include a rear window defogger. Tinted glass. Halogen headlights. Even a child-proof lock system for the rear doors.

The Golf, in either the 2-door or 4-door version, intends to establish leadership in its class as much by its thoughtfulness as by its versatility.



*See EPA mileage figures on specifications page.



Remote controlled left hand mirror is standard on the new Golf.



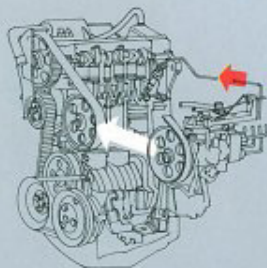
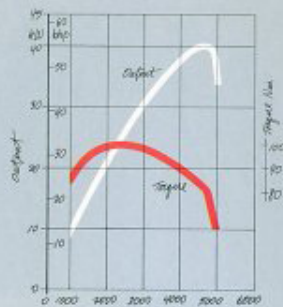
Golf offers standard steel belted radial tires for greater road-hugging stability.

The Golf offers the same kind of nimble performance that many people pay thousands more to experience. For the Golf sports the same kind of sophisticated engineering features—like rack and pinion steering, 4-wheel independent suspension and power front disc brakes—found on some of the most exotic and expensive cars in the world.

What you won't find on these other cars is extraordinary fuel efficiency* to complement this superb

handling. The new Golf lets you choose from two fuel-stingy powerplants—a 1.8 liter fuel-injected gasoline engine and a 1.6 liter Diesel, both coupled with a 5-speed transmission. An automatic transmission is optionally available with the gas engine.

So now when your Golf deftly straightens out an S-curve, you can rest secure in the knowledge that perhaps no other car can do it more economically.



Golf's new diesel engine combines spirited performance with exceptional fuel efficiency.



*See EPA mileage figures on specifications page.

IT'LL DAZZLE YOU WITH ITS FOOTWORK



TOTAL COMMAND IN TOTAL CONFIDENCE



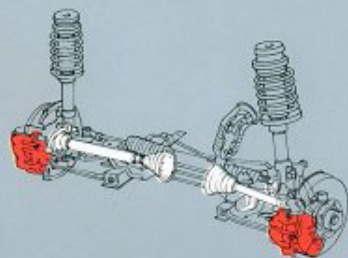
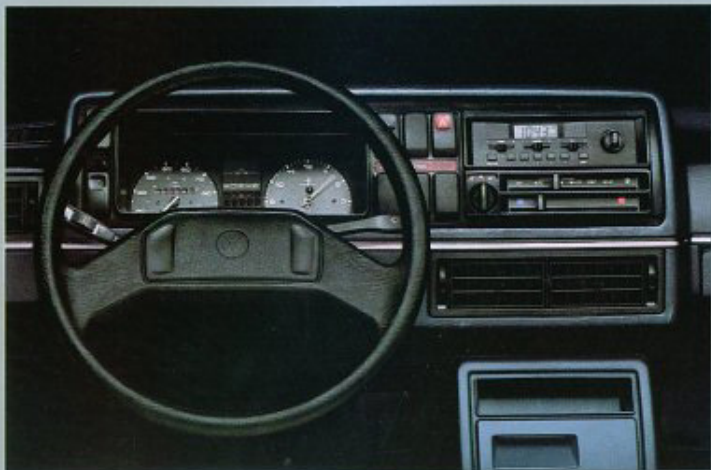


Our German engineers insist that the driver be in complete control of his vehicle at all times. To this end, the Golf's full instrumentation is perfectly placed within the driver's field of vision. And all critical controls can be activated with the flick of a wrist.

This sense of control extends far beyond the cockpit into the very design of the Golf itself. Consider, for example, Golf's specially engineered front and rear axles. They not

only provide a quieter and more comfortable ride, they also help maintain directional control even during hard cornering. And since the Golf is intended to be driven in all weather conditions, it sports front-wheel drive for greater road-hugging ability.

Our engineers intend that you always be totally in command of your Golf, never the other way around.



Golf's independent front suspension was designed for increased stability and maximum directional control.



Golf features standard power front disc brakes for sure, straight-line stops.

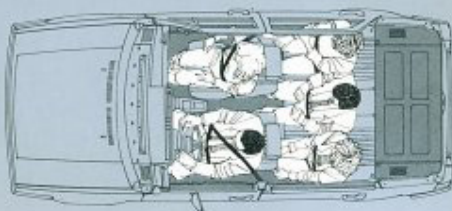
Once inside the Golf, you'll think you're in a car several notches up the luxury ladder. Head room, leg room and hip room are generous enough to seat five. Considerate touches abound, like door map pockets and an illuminated, lockable glovebox.

Fully reclining bucket seats with adjustable headrests will relax your body. While plush pile carpeting cushions your feet. And if you listen carefully, you'll hear almost nothing. Because the Golf's aerodynamic

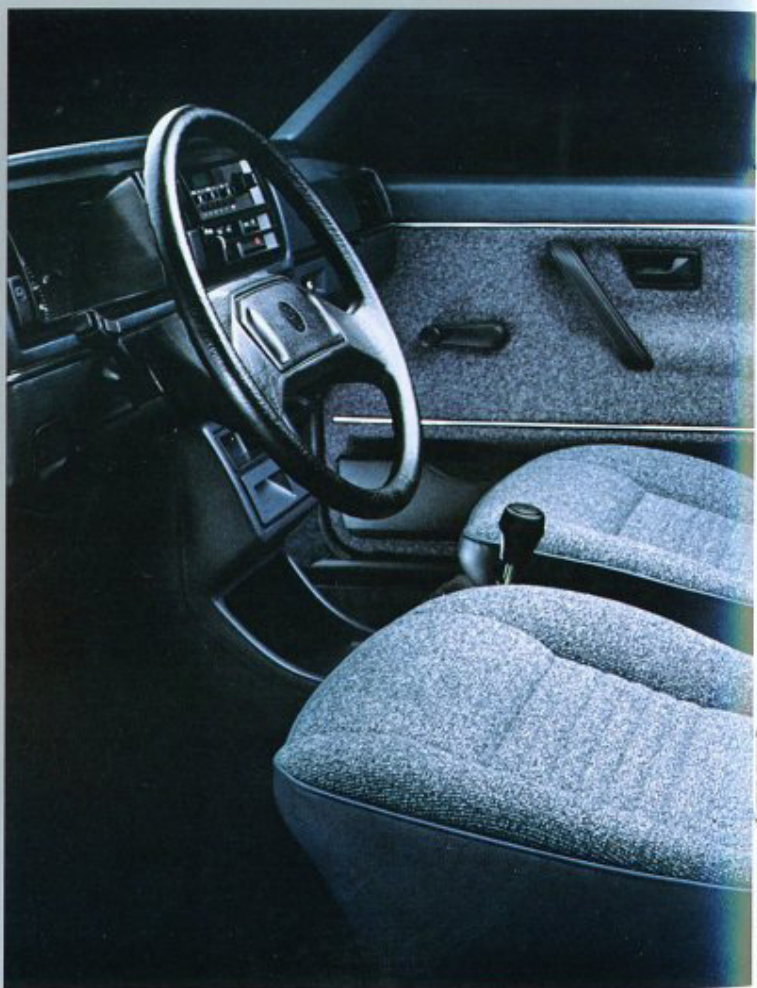
design provides a low interior noise level.

If you plan on carrying a big load, Golf has big plans for you: 17.9 cubic feet of cargo space. If you need even more room, an optional split rear seat will increase your carrying capacity up to 40 cubic feet.

So whether you're moving people or things, Golf has room to spare.



An optional split rear seat increases Golf's cargo capacity up to an astonishing 40 cubic feet.



ENJOY THE WIDE OPEN SPACES



ENGINEERED TO PERFORM, BUILT TO LAST

Our German engineers endowed the Golf with some of the most sophisticated engineering features in the automotive world. Then they built into it the kind of durability that will allow you to enjoy its outstanding performance for years to come.

Engineering excellence

Since the Golf is all-new from the ground up, everywhere you look—from its conception in our design studios, to our endless hours of computer analysis, to its final assembly—

you'll find the latest in automotive technology. For example, should one of the front wheels stray off the road and onto a soft surface, the negative steering roll radius of the front suspension system helps maintain directional control and brings the car back on track again. The new track-correcting rear axle not only provides a quieter ride, it also helps minimize oversteering for better control during hard cornering. For greater safety, the Golf has a dual-diagonal

braking system. And for road-gripping traction and directional control, front-wheel drive.

Built for the long run

The Golf's manufacturing process is just as advanced as its engineering. Sophisticated robots are used for both repetitive tasks as well as to achieve a continuous level of quality unattainable by more conventional production techniques.

Also, since rust and corrosion are the prime enemies of a car's longevity,



More than 5,200 components were analyzed by both man and computers in the development of the new Golf.

Use of industrial robots in the final assembly process allow for precision welding of Golf's door frames.

German craftsmen building early clay model prototype of the new Golf instrument panel in Volkswagen styling studios.

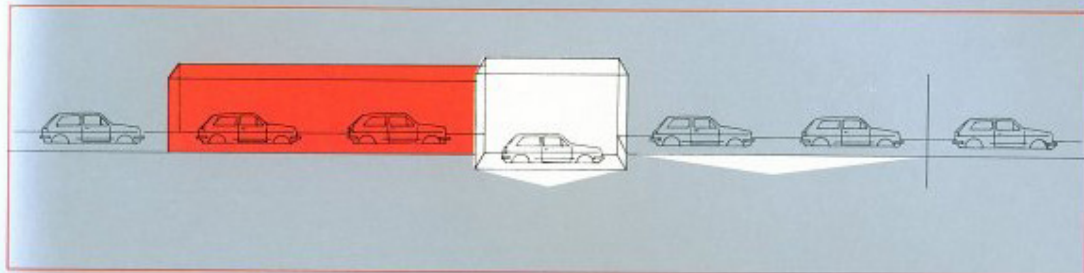


ity, the Golf is protected to an extraordinary degree. Galvanized steel is used in all critical areas. Folds and seals are used instead of welds in the assembly of door hatches and hood panels. In addition to a complete immersion in a cathaphoretic primer bath, all the hollow sections of the body shell are flooded with hot wax to keep out moisture. Then a full undercoating is applied, as well as a stone guard spray to protect against pebble damage.

But nowhere is Volkswagen's pursuit of excellence more tenacious than in the area of quality control. Every part of every Golf is scrutinized both by computers and by inspectors. As a result, no Golf is allowed to leave the factory until it is Volkswagen perfect.

So don't just expect your Golf to last longer than ordinary cars. Expect it to go on, and on and on.

Golf bodysells are completely immersed in a cathaphoretic primer bath prior to painting.



Extensive hot wax body cavity protection is sprayed into heated Golf bodysells during the assembly process.



Engineers road tested Golf for more than six million kilometers under all road and climate conditions.

PERSONALIZE YOUR GOLF

Since everyone's driving habits differ, we have included a complete selection of options that will help you equip your Golf to meet your personal preferences.

So if you can't stand the heat, choose the air-conditioning system. If you'd like a little more sun and fresh air, there's a manual sunroof. If you prefer to let your Golf do some of the driving work, we suggest you consider the automatic transmission, power steering and cruise

control.

You can also surround yourself with music with an electronic AM/FM stereo cassette, or even add more room with a split rear seat.

Featured options appearing below include: a sunroof, AM/FM stereo cassette radio, automatic transmission, AM/FM stereo cassette radio, full wheel covers, split rear seat, cruise control and Golf's passive restraint system.



FEATURES AND OPTIONS

	GOLF DIESEL		GOLF	
	2-Door	4-Door	2-Door	4-Door
MECHANICAL				
1.6 liter 4-cylinder diesel engine	S	S	—	—
1.8 liter 4-cylinder fuel-injected engine	—	—	S	S
Electronic ignition	—	—	S	S
3-speed transmission	S	S	S	S
Tachometer and digital clock	—	—	S	S
MacPherson strut front suspension	S	S	S	S
Independent rear suspension	S	S	S	S
Rack and pinion steering	S	S	S	S
Power assisted brakes (front disc/rear drum)	S	S	S	S
Steel belted radial tires	S	S	S	S
EXTERIOR				
All steel unit body construction	S	S	S	S
Rectangular halogen headlights	S	S	S	S
Front spoiler	S	S	S	S
Stone guards at rear wheel opening	S	S	S	S
Lower bodyside moldings	S	S	S	S
Left remote controlled mirror	S	S	S	S
Right remote controlled mirror	—	—	S	S
Black drip rail molding	S	S	S	S
Hub caps	S	S	S	S
Tinted glass	S	S	S	S
Lockable gas cap	S	S	S	S
INTERIOR				
Padded instrument panel	S	S	S	S
Full instrumentation including speedometer, trip odometer, clock, ¹ fuel gauge, water temperature gauge, upshift indicator light ² , and other warning lights	S	S	S	S
Center console with ashtray, cigarette lighter and rear seat heater ducts ³	S	S	S	S
Fully reclining woven cloth front bucket seats with adjustable headrests	S	S	S	S
Fold and tumble rear seat	S	S	S	S
Fully padded, cut pile carpeting	S	S	S	S
Carpeted luggage compartment floor and cover	S	S	S	S
Electric rear window defroster	S	S	S	S
Child-proof lock system on rear doors	—	S	—	S
Courtesy light and instrument illumination	S	S	S	S
OPTIONS				
Air conditioning	O	O	O	O
Sunroof	O	O	O	O
Automatic transmission	—	—	O	O
Power steering	O	O	O	O
AM/FM stereo radio with four speakers	O	O	O	O
AM/FM stereo cassette radio with four speakers	O	O	O	O
Electric rear window wiper/washer	O	O	O	O
Split rear seat ⁴	O	O	O	O
Leatherette upholstery	O	O	O	O
Cruise control	O	O	O	O
Passive restraint system	O	O	O	O
175/70SR tires with 5½" x 13 steel wheels	O	O	S	S
Full wheel covers ⁵	O	O	O	O
Metallic paint	O	O	O	O
Water separator	O	O	—	—
Engine block heater	O	O	—	—

¹ Analog clock on Golf Diesel; digital clock on Golf. ² Manual transmission only. ³ In mini-console on Golf Diesel. ⁴ Cloth seats only with carpeted luggage compartment. ⁵ Requires 5½" x 13 steel wheels.



SPECIFICATIONS

	GOLF DIESEL	GOLF
ENGINE TYPE	4-cyl. in-line, SOHC	4-cyl. in-line, SOHC
DISPLACEMENT	1.6 liter, 97 cu. in.	1.8 liter, 109 cu. in.
HORSEPOWER @ RPM (SAE Net)	52 @ 4,800	85 @ 5,250
TORQUE @ RPM	71 ft. lbs. @ 2,000	96 ft. lbs. @ 3,000
BODY/FRAME CONSTRUCTION	Unibody construction, bolt-on front fenders	
FRONT SUSPENSION	Independent MacPherson struts, coil springs, telescopic shock absorbers	
REAR SUSPENSION	Independent torsion beam axle, coil springs, telescopic shock absorbers	
STEERING TYPE	Rack and pinion	
TURNING CIRCLE	34.4 ft.	
BRAKES	Dual diagonal circuits with power assist, 9.4" front discs, 7.1" rear drums, self-adjusting. Mechanical parking brake.	
DIMENSIONS		
Wheelbase	97.3"	97.3"
Front track	55.7"	56.3"
Rear track	55.4"	56.0"
Overall length	158.0"	158.0"
Overall width	65.5"	65.3"
Overall height	55.7"	55.7"
Ground clearance	4.6"	4.6"
CAPACITIES		
2-Door luggage capacity	17.9 cu. ft.	
4-Door luggage capacity	17.6 cu. ft.	
Luggage capacity—rear seat-folded	40.0 cu. ft.	
Fuel tank capacity	14.5 U.S. gallons	
WHEELS AND TIRES		
Golf Diesel	5½ x 13 steel wheels; 155/80SR13 tires	
Golf	5½ x 13 steel wheels; 175/70SR13 tires	
EPA MILEAGE ESTIMATES*		
	30 STATES	
	CITY	HIGHWAY
Golf Diesel	37	46
Golf with 3-speed manual	27	34
Golf with 3-speed automatic	24	27
EXTERIOR COLORS		
Golf Diesel and Golf	Cashmere White Manila Beige Deep Cosmic Blue	Gold Metallic Frost Blue Metallic Diamond Silver Metallic

See your Volkswagen dealer for color and trim selections.

*Remember: Use the CITY mileage for comparison to others. Your actual mileage may vary depending on speed, trip length and weather. Your highway mileage will probably be lower.

Volkswagen of America, Inc. believes the specifications in this brochure to be correct at time of printing. However, specifications, standard equipment and options are subject to change without notice. Some options may be unavailable when your vehicle is built. Please ask your dealer for advice concerning current availability of options and verify that your vehicle includes the optional equipment you ordered.

VOLKSWAGEN, GOLF, JETTA, SCIROCCO, QUANTUM and VANAGON are registered trademarks of VOLKSWAGENWERK AG. Form No. W64 175 6011 Litho in U.S.A.

THE 1985 VOLKSWAGEN TRANSPORTATION SYSTEM

If the Golf doesn't meet your particular driving needs, consider one of the other members of the Volkswagen family.

The Jetta is the first affordable German road car.

The Cabriolet combines open air touring with exhilarating performance.

The Scirocco is a true German sports coupe featuring brilliant performance at a practical price.

The Quantum Wagon is a European family wagon offering versatility, precise German engineering and outstanding driver control at an exceptionally affordable price.

The Quantum GL Sedan provides the sophisticated handling and elegant comfort of a German grand touring sedan in the classic European tradition.

The Vanagon combines the roominess and versatility of a full-size passenger van with the comfort, ease of handling and economy of a mini-van.

The Volkswagen Camper offers the camping enthusiast outstanding flexibility, comfort and convenience in a truly unique recreational vehicle.

Whichever you choose, your Volkswagen will be the single smartest purchase you can make to meet your transportation needs.



IT'S NOT A CAR
IT'S A VOLKSWAGEN

